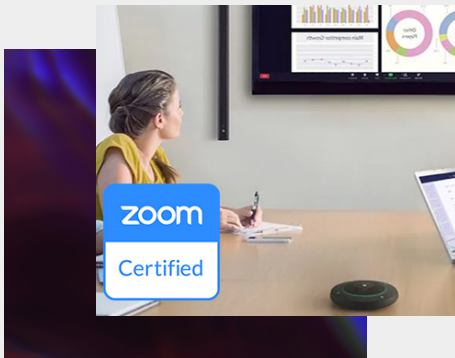


NEW FEATURES FOR ADECIA SOLUTIONS AND RM-SERIES MICROPHONES WITH FIRMWARE 2.0

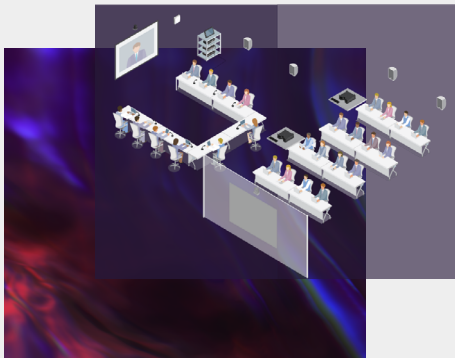


New Functions and Features for ADECIA



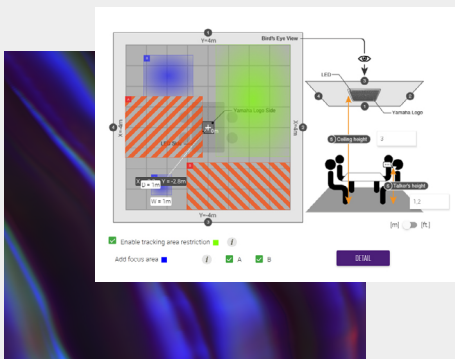
ZOOM CERTIFICATION

With the new **ADECIA** Firmware 2.0 the **ADECIA** Ceiling and the **ADECIA** Tabletop solution, has received Zoom certification.



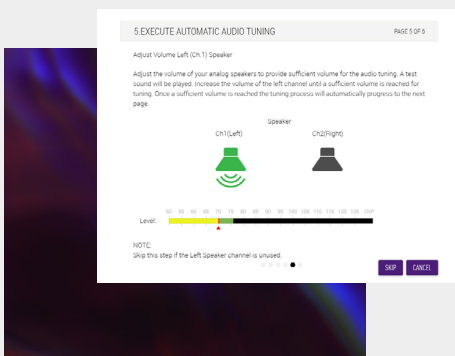
PRESET STORE/RECALL FUNCTION

A great improvement is the Preset Store/Recall Function for **ADECIA**. The Conference Processor RM-CR can be used for dividing and combining rooms with different room arrangements.



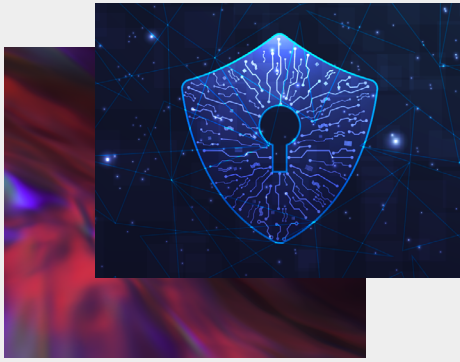
CUSTOMIZED TRACKING AREA FOR CEILING SOLUTION

For the **ADECIA** ceiling solution, we have added a choice of 2 focus and 2 exclusion areas to create special zones for sound detection. A customized „Tracking Area“ for more accurate audio pick-up can be defined easily. Users can now pre-set RM-CG's beam-tracking zones using a color-coded system in the Web UI.



IMPROVED SUPPORT FOR ANALOGUE SPEAKERS

Improved support for analogue speakers - speaker volume is measured before tuning begins.



SUPPORTS IEEE 802. 1X FOR ENHANCED NETWORK SECURITY

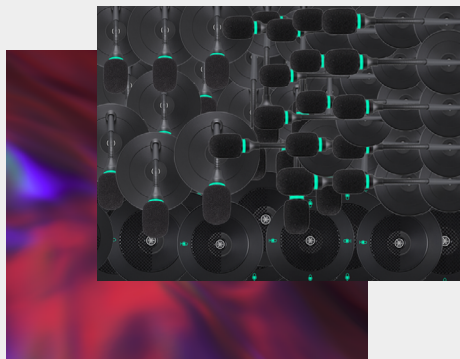
IEEE 802. 1X incorporated in **ADECIA** for enhanced network security.

New Functions and Features and for RM-Series Microphones



LOW LATENCY MODE FOR RM-SERIES MICROPHONES

The new low-latency mode in the RM Series microphones now allows the units to be used for Voice Lift with appropriate signal processors (not with RM-CR!!).



UP TO 64 RM-W MICROPHONES

With appropriate signal processors now 64 wireless Microphones of the RM-W-series can be used together in parallel (not with RM-CR!!).

Further key facts

- Added support for AES 67 for ADECIA - enables **ADECIA** components to communicate with non-DANTE devices that support AES 67.
- Added Output Router for selecting the Dante output signal.
- Added the „Peripheral Detail“ screen for VXL1-16P to the Web GUI.
- Added the Weight parameter to Auto mixer.
- Added a page for adjusting the analog speaker volume during automatic audio tuning.
- Dante Output Ch. 1/Ch. 2 can now be muted individually. In addition, a parameter to link with the LED display of the Mute status has been added.
- Low latency mode can now be selected for RM-WOM/WDR, in addition to RM-WGL/WGS.
- Equalisation for the Microphones adjusted to take room acoustics into account.