



TOOLS for MOTIF-RACK

Installation Guide / Installationshandbuch / Manuel d'installation

SPECIAL NOTICES

- The software and this Installation Guide are exclusive copyrights of Yamaha Corporation.
- Use of the software and this guide is governed by the SOFTWARE LICENSING AGREEMENT which the purchaser fully agrees to upon breaking the seal of the software packaging. (Please read carefully the AGREEMENT at the end of this guide before installing the application.)
- Copying of the software or reproduction of this guide in whole or in part by any means is expressly forbidden without the written consent of the manufacturer.
- Yamaha makes no representations or warranties with regard to the use of the software and documentation and cannot be held responsible for the results of the use of this guide and the software.
- Copying of the commercially available music data is strictly prohibited except for your personal use.
- The company names and product names in this Installation Guide are the trademarks or registered trademarks of their respective companies.
- Future upgrades of application and system software and any changes in specifications and functions will be announced separately.

BESONDERE HINWEISE

- Dieses Programm und diese Installationsanleitung sind im Sinne des Urheberrechts alleiniges Eigentum der Yamaha Corporation.
- Die Benutzung des Programms und dieser Anleitung unterliegt der SOFTWARE-LIZENZVEREINBARUNG, mit der sich der Erwerber durch Öffnen des Siegels der Programmverpackung uneingeschränkt einverstanden erklärt. (Bitte lesen Sie die VEREINBARUNG am Ende dieser Anleitung vor Installation der Anwendung sorgfältig durch.)
- Das Kopieren der Software und die Reproduktion dieser Anleitung, in welcher Form auch immer, in Teilen oder als Ganzes, sind nur mit schriftlicher Genehmigung des Herstellers erlaubt und sonst ausdrücklich verboten.
- Yamaha leistet keinerlei Garantie hinsichtlich der Benutzung des Programms und der zugehörigen Dokumentation und übernimmt keine Verantwortung für die Ergebnisse der Benutzung dieser Anleitung oder des Programms.
- Das Kopieren im Handel erhältlicher Musikdaten ist nur für Ihren Privatgebrauch zulässig und sonst streng untersagt.
- Die in dieser Installationsanleitung erwähnten Firmen- und Produktnamen sind Warenzeichen bzw. eingetragene Warenzeichen der betreffenden Firmen.
- Zukünftige Aktualisierungen von Anwendungs- und Systemsoftware sowie jede Änderung der technischen Daten und Funktionen werden separat bekanntgegeben.

REMARQUES PARTICULIERES

- Les droits d'auteurs (copyright) de ce logiciel et de ce manuel d'installation appartiennent exclusivement à Yamaha Corporation.
- L'usage de ce logiciel et de ce manuel est défini par l'accord de licence auquel l'acheteur déclare souscrire sans réserve lorsqu'il ouvre le sceau de l'emballage du logiciel. (Veuillez donc lire attentivement l'accord de licence du logiciel situé à la fin de ce manuel avant d'installer le logiciel.)
- Toute copie du logiciel et toute reproduction totale ou partielle de ce manuel, par quel moyen que ce soit, est expressément interdite sans l'autorisation écrite du fabricant.
- Yamaha n'offre aucune garantie en ce qui concerne l'utilisation du logiciel et de la documentation. Yamaha ne peut en aucun cas être tenu responsable des dommages éventuels résultant de l'utilisation de ce manuel et de ce logiciel.
- Toute copie de données musicales commercialisées est formellement interdite, sauf pour usage personnel.
- Les noms des firmes et des produits apparaissant dans ce manuel d'installation sont des marques commerciales ou des marques déposées appartenant à leurs détenteurs respectifs.
- Les mises à jour du programme et du système ainsi que toute modification des caractéristiques et fonctions seront annoncées séparément.

Important Notices about the CD-ROM

Data Types

This CD-ROM includes two types of data: application software and sampled audio data. Please refer to pages 3 (Windows) and 9 (Macintosh) for software installation instructions.

These applications allow you to edit MOTIF-RACK data and transfer data between your computer and the MOTIF-RACK.

You can play back the audio data from an audio CD player (or any CD playing/ripping function on your computer).

The application software is contained on track 1 (as recognized on an audio CD player), and the sampled audio data is contained in the subsequent tracks.

Tracks 2 - 12 contain the demo songs created on the MOTIF-RACK or on another platform device using the Modular Synthesis Plug-in Boards. You can check out the Plug-in Board voices by playing back these tracks.



CAUTION

Never attempt to play back track 1 (containing the application software) on an audio CD player. Doing so may result in damage to your hearing as well as to your CD player/audio speakers.

Track 1	Application software; do NOT attempt to play back this track.
Track 2	Demonstration song recorded on the PLG150-DR.
Track 3	Demonstration song recorded on the PLG150-PC.
Track 4, 5	Demonstration songs recorded on the PLG150-PF.
Track 6, 7	Demonstration songs recorded on the PLG150-VL.
Track 8-10	Demonstration songs recorded on the PLG150-AN.
Track 11	Demonstration song recorded on the PLG150-DX.
Track 12	Demonstration song recorded on the PLG100-XG.

Operating System (OS)

The applications in this CD-ROM are provided in versions for both Windows and Macintosh operating systems. The installation procedure and the applications themselves differ depending on the operating system that you are using. Please refer to the appropriate installation instructions.

For Windows, see page 3, 12.

For Macintosh, see page 9.

CD-ROM Installation Procedure

Before breaking the seal of the software packaging, please read carefully the Software Licensing Agreement at the end of this guide.

- 1 Verify that your system meets the operating requirements of the software (Voice Editor, Plug-in Board Editors, driver, etc.).
..... Windows: page 4; Macintosh: page 9
- 2 Install the appropriate driver to your computer, and make the necessary settings. Windows: page 5; Macintosh: page 10
- 3 Install the software (Voice Editor, etc.). Windows: page 7; Macintosh: page 11
- 4 Start up the software.

For subsequent operations, refer to the owner's manual for each software program (online help/PDF manual).

NOTE In order to view PDF files, you will need to install Acrobat Reader in your computer (Windows: page 5; Macintosh page: 10).

Quick solutions

- Changing the MIDI port settings of the USB Driver page 12
- The driver cannot be installed page 13
- Playback response is not correct page 13
- How can I delete or re-install the driver? page 13

For Windows Users

Contents of the CD-ROM

The CD-ROM contains a variety of applications (with installers) and data in the following folders.

Folder Name	Application Name	Contents	
Acroread_	Acrobat Reader*1*2	Enables you to view each PDF manual for the applications.	
SQ01_	SQ01*1	Full-scale sequencing software, for easily creating and playing back your own songs on computer.	
OPTPlug_	VEMRack_	Voice Editor for MOTIF-RACK*1	Enables you to edit the MOTIF-RACK voices on your computer.
	VLV_	VL Visual Editor*1	
	ANEX_	AN Expert Editor*1	
	DXS_	DX Simulator*1	
	DR_	Plug-in Board Editor for PLG150-DR*1	
	PC_	Plug-in Board Editor for PLG150-PC*1	
Plug_	XGE_	XG Editor*1	
USBdrv_	YAMAHA USB MIDI driver (for Win98/Me)	Enables your computer to communicate with the MOTIF-RACK when your computer and the MOTIF-RACK are connected using a USB cable.	
USBdrv2K_	YAMAHA USB MIDI driver (for Win2000/XP)		
DemoSong	MOTIF-RACK Demo Songs	Demo songs for the SQ01 when using the MOTIF-RACK as a tone generator.	

*1 These applications are supplied with online/PDF manuals.

*2 Unfortunately, Yamaha makes no guarantee concerning the stability of these programs nor can it offer user support for them.

The applications in the "OPTPlug_" folder can be used as either stand-alone applications or as plug-in software within an Open Plug-in Technology (OPT) compatible program.

The XG Editor can only be used as plug-in software within the SQ01.

About Open Plug-in Technology

You can start the Voice Editor for MOTIF-RACK or the File Utility software as either a stand-alone software or a plug-in application in the Open Plug-in Technology compatible application. Open Plug-in Technology (OPT) is a newly developed software format that allows control over MIDI devices from a music software sequencer. For example, this allows you to start up and operate various parts of your music system, such as plug-in board editors, and mixing control editors – directly from an OPT-compatible sequencer, without having to use each separately. This also makes it unnecessary to set MIDI drivers for each application, streamlining your music production system and making all operations more convenient and seamless.

About the OPT Levels

The client application and its compatibility with OPT is divided into three levels, as shown below.



Level 1 – OPT Panels provides basic support for opening and displaying OPT control panels that can transmit data via the clients' external MIDI ports. Typically this will allow basic hardware editor control panels to operate properly.






Level 2 – OPT Processors provides support for real-time MIDI processors and panel automation. Typically this will allow both real-time and offline MIDI effects (e.g. Arpeggiators, transposers etc.) to operate properly and supply automation to OPT panels.



Level 3 – OPT Views provides support for edit views and MIDI processors/panels that require direct access to client sequencer storage structures. Typically this will allow sophisticated MIDI edit views to be supported (e.g. List editors, Auto Accompaniment, Data Checkers etc.).

OPT Level Implementation for the Voice Editor

This chart shows the OPT compatibility of the Voice Editor for MOTIF-RACK.

OPT levels of the client application	Voice Editor for MOTIF-RACK operation	
	Operation support	Operation limits
VIEWS (Level3) 	Yes	None
PROCESSORS (Level2) 	Yes	None
PANELS (Level1) 	Yes (with limitations)	Bulk reception

NOTE Certain operations may not work as expected if there is no corresponding function in the client application (sequencer, etc.). The highest level of implementation for the client application is indicated in the OPT logo (which appears along with the version information in the application).

For information on the OPT compatibility of the other editors, refer to the on-line manual of each software.

Minimum System Requirements

The system requirements below may differ slightly depending on the particular operating system.

• SQ01

OS: Windows 98/Me/2000/XP Home Edition/XP Professional
Computer: 450 MHz or higher; Intel Pentium/Celeron processor
Available Memory: 64 MB or more (128 MB or more is recommended)
Hard Disk: 300 MB or more
Display: 800 x 600, High Color (16 bit)

• Voice Editor for MOTIF-RACK

OS: Windows 98/Me/2000/XP Home Edition/XP Professional
Computer: 166 MHz or higher; Intel Pentium/Celeron processor
Available Memory: 32 MB or more
Hard Disk: 16 MB or more
Display: 640 x 480, High Color (16 bit)

• Plug-in Board Editors

OS: Windows 98/Me/2000/XP Home Edition/XP Professional
Computer: 166 MHz or higher; Intel Pentium/Celeron processor
Available Memory: 32 MB or more
Hard Disk: 12 MB or more
Display: 800 x 600, High Color (16 bit)
 When using the VL Visual Editor, 1024 x 768 or more.

• USB MIDI Driver

OS: Windows 98/Me/2000/XP Home Edition/XP Professional
Computer: 166 MHz or higher; Intel Pentium/Celeron processor
Available Memory: 32 MB or more (64 MB or more is recommended)
Hard Disk: 2 MB or more

Software Installation

Uninstall (removing the installed application)

You can remove the installed application software. Select [START] (→ [Settings]) → [Control Panel] → [Add/Remove Programs] → [Install/Uninstall], then select the application to be removed and click [Add/Remove...]. Follow the on-screen instructions to uninstall the application.

NOTE The button names or menus may differ depending on the computer OS.

Acrobat Reader

In order to view the electronic (PDF) manuals included with each application, you'll need to install Acrobat Reader.

NOTE If an older version of Acrobat Reader is installed on your PC, you'll need to uninstall it before proceeding.

- 1 Double-click on the "Acroread_" folder. Four different language folders will be displayed.
- 2 Select the language you want to use and double-click on its folder. The file "arxxx***.exe" file will be displayed. ("xxx" indicates figures and "***" indicates the selected language; e.g., "ar500enu.exe".)
- 3 Double-click on "arxxx***.exe." Acrobat Reader Setup Dialog box will be displayed.
- 4 Execute the installation by following the on-screen directions.

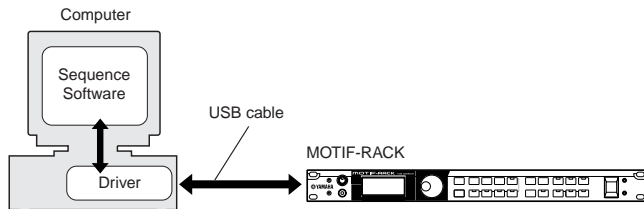
After installation is complete, the Acrobat folder appears on your PC (in Program Files, as the default).

For information on using the Acrobat Reader, refer to the Reader Guide in the Help menu.

USB MIDI Driver

To operate the MOTIF-RACK from your computer via USB, you'll need to install the appropriate driver software.

The USB-MIDI driver is software that transfers MIDI data back and forth between sequence software and the MOTIF-RACK via a USB cable.



Windows 98/Me users → See below.
Windows 2000/XP users → See page 6.

● Installing the driver on a Windows 98/Me system

- 1 Start the computer.
- 2 Insert the included CD-ROM into the CD-ROM drive.
- 3 Make sure the POWER switch on the MOTIF-RACK is set to OFF and use the USB cable to connect the USB terminal of the computer (or the USB hub) to the USB terminal of the MOTIF-RACK. When the MOTIF-RACK is turned on, the computer automatically displays the "Add New Hardware Wizard." If the Add New Hardware Wizard does not appear, click "Add New Hardware" in the Control Panel.

NOTE For Windows Me users, check the radio button to the left of "Automatic search for a better driver (Recommended)" and click [Next]. The system automatically starts searching and installing the driver. Proceed to Step 8. If the system does not detect the driver, select "Specify the location of the driver (Advanced)" and specify the CD-ROM drive's "USBdrv_" folder to install the driver.

Windows 98



Windows Me



- 4 Click [Next]. The window below enables you to select the search method.



- 5 Check the radio button to the left of “Search for the best driver for your device. (Recommended).” Click [Next]. The window below enables you to select a location in which to install the driver.



- 6 Check the “CD-ROM drive” box and uncheck all other items. Click [Next].

NOTE The system may ask you to insert a Windows CD-ROM while it checks for the driver. Specify the USBdrv_ directory of the CD-ROM drive (such as D:\USBdrv_) and continue the installation.

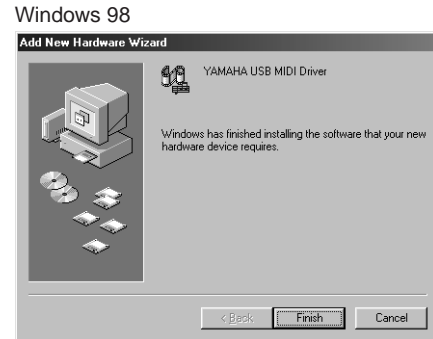
NOTE When using the Windows 98, specify the USBdrv_ directory of the CD-ROM drive (such as D:\USBdrv_) and continue the installation.

- 7 When the system detects the driver on the CD-ROM and is ready for installation, it displays the following screen. Make sure that the “YAMAHA USB MIDI Driver” is listed, and click [Next]. The system starts the installation.



- 8 When the installation is complete, the following screen appears. Click [Finish].

NOTE Some computers may take about ten seconds or more to show this screen after the installation is complete.



The driver has been installed.

● Installing the driver on a Windows 2000 system

- 1 Start the computer and use the “Administrator” account to log into Windows 2000.
- 2 Select [My Computer | Control Panel | System | Hardware | Driver Signing | File Signature Verification], and check the radio button to the left of “Ignore - Install all files, regardless of file signature” and click [OK].
- 3 Insert the included CD-ROM into the CD-ROM drive.
- 4 Make sure the POWER switch on the MOTIF-RACK is set to OFF and use the USB cable to connect the USB terminal of the computer (or the USB hub) to the USB terminal of the MOTIF-RACK. When the MOTIF-RACK is turned on, the computer automatically displays the “Found New Hardware Wizard.” Click [Next].
- 5 Check the radio button to the left of “Search for a suitable driver for my device. (Recommended).” Click [Next].
The window that appears enables you to select a location in which to install the driver.
- 6 Check the “CD-ROM drives” box and uncheck all other items. Click [Next].
NOTE The system may ask you to insert a Windows CD-ROM while it checks for the driver. Specify the “USBdrv2k_” directory of the CD-ROM drive (such as D:\USBdrv2k_) and continue the installation.
- 7 When the installation is complete, the system displays “Completing the Found New Hardware Wizard.” Click [Finish].
NOTE Some computers may take about ten seconds or more to show this screen after the installation is complete.
- 8 Restart the computer. The driver has been installed.

● Installing the driver on a Windows XP system

- 1 Start the computer.
- 2 Select [Start] → [Control Panel]. If the control panel appears as shown below, click “Switch to Classic View” in the upper left of the window. All control panels and icons will be displayed.



- 3 Go to [System] → [Hardware] → [Driver Signing] → [File Signature Verification], and check the radio button to the left of “Ignore -Install all files, regardless of file signature” and click [OK].
- 4 Click the [OK] button to close System Properties, and then click “X” in the upper right of the window to close the Control Panel.
- 5 Insert the included CD-ROM into the CD-ROM drive.
- 6 Make sure the POWER switch on the MOTIF-RACK is set to OFF and use the USB cable to connect the USB terminal of the computer (or the USB hub) to the USB terminal of the MOTIF-RACK. When the MOTIF-RACK is turned on, the computer automatically displays the “Found New Hardware Wizard.”
- 7 Check the radio button to the left of “Search for a suitable driver for my device. (Recommended).” Click [Next]. The system starts the installation.
- 8 When the installation is complete, the system displays “Completing the Found New Hardware Wizard.” Click [Finish].
NOTE Some computers may take about ten seconds or more to show this screen after the installation is complete.
- 9 Restart the computer. The driver has been installed.

● SQ01

In addition to its sequencer function, the SQ01 can also be used for voice editing once the Plug-in application “Voice Editor for MOTIF-RACK” is installed.

- 1 Double-click on the “SQ01_” folder. Various files including “setup.exe” will be displayed.
- 2 Double-click on “Setup.exe.”
SQ01 Setup Dialog box will be displayed.
- 3 Execute the installation by following the directions appearing on the screen. After the installation, select “Restart”.
After restarting Windows, you will find the YAMAHA folder on your PC (Program Files as the default) and SQ01 folder in the YAMAHA folder. Refer to the online manuals for instructions on how to use the application.

SQ01 MIDI Setup

- 1 Start SQ01.
Choose [Programs] from the [Start] menu, then select [YAMAHA SQ01] → [SQ01].
- 2 From the [Setup] menu (Track View window), select [MIDI] → [Device], to call up the “Device” page of the “MIDI” dialog.
- 3 Select the appropriate output port (for example, “YAMAHA USB OUT 0-1”) in the [OUT] box, to use the USB connection with the MOTIF-RACK.
- 4 Select the appropriate input port (for example, “YAMAHA USB IN 0-1”) in the [IN] box, then click [OK] to close the dialog box.
NOTE You can select the audio driver and the audio in/out device if necessary. From the [Setup] menu, select [Audio] → [Device] to call up the “Device” page of the “Audio” dialog.
NOTE The USB connection to the MOTIF-RACK can only be used for transfer of MIDI data. No audio data can be transferred via USB.

● Voice Editor, Editors for Plug-in Boards

You can use edit the voices of the MOIF-RACK, and Plug-in Boards.

- 1 Double-click on the “OPTPlug_” or “Plug_” folder.
Some folders will be displayed (page 3).
- 2 Double-click the desired folder.
Various files including “Setup.exe” will be displayed.
- 3 Double-click on “Setup.exe.”
The Software Setup Dialog box will be displayed.
- 4 Execute the installation by following the directions appearing on the screen. After completing the installation procedure, you can find the each software in the designated folder and find that each application is added to the [Plug-in]/[View] menu on the SQ01. Refer to the online help/PDF manuals for instructions on how to use the application.

MIDI port setting (when starting the software as a stand-alone application)

Before setting the MIDI port on the Voice Editor or other editors, you should set the MIDI port from the MIDI SETUP toolbar.

NOTE When you start the editor as a plug-in application in the Open Plug-in Technology compatible application, refer to the PDF manual for the respective software.

- 1 Start the editor.
- 2 Click the MIDI Setup button in the Toolbar.



MIDI Setup button

- 3 In the MIDI Setup window called up via step #2, select the appropriate device from the [IN]/[OUT] box to use the MOTIF-RACK connected to the USB terminal (For example, select “YAMAHA USB IN 0-1” and “YAMAHA USB OUT 0-1”).

NOTE In order for MIDI ports to be available here, you’ll need to select the relevant MIDI port within each application software. This is the port that you’ll use in the various software. For details on setting the MIDI port, refer to the on-line manual of each software.

Demo Song Playback with the included Sequence Software

● Files

Files in the “DemoSong” folder are the demo song data for the included sequence software. You can play back the demo songs as follows.

NOTE For details about the software, refer to the on-line help included in the software.

NOTE Some of the demo songs provided here may be the same as those included on your instrument. (Depending on the particular instrument, all songs here may be the same as the songs on your instrument.) At the very least, you can use the demo songs to try out and confirm the operations and functions of the sequence software.

● Procedure

- 1 Verify that your system meets the operating requirements of the software (page 4).
- 2 Connect your instrument to your computer. (Refer to the owner’s manual for details on connections.)
- 3 Install the appropriate driver for your computer, and make the necessary settings (page 5).
- 4 Install the sequence software (page 7).
- 5 Start up the software, then make the necessary MIDI settings (page 7).
- 6 Copy the demo song file(s) in the CD-ROM to the hard disk.
- 7 From the [File] menu, select [Open] to call up the “Open” dialog box. Select the demo song copied to hard disk from the box, then click the [Open] button. The New Track View Window (refer to the software’s on-line help) will be shown.
- 8 Click the play button of the Transport Bar (refer to the software’s on-line help) to start the demo song playback.

For other operations, refer to the sequence software’s on-line help.

For Macintosh Users

Contents of the CD-ROM

The CD-ROM includes two folders: "International" and "Japanese." Double-click on the "International" folder to open it. A variety of applications (with installers) and data are contained in the following folders.

Folder Name	Application Name	Contents
Acroread_	Acrobat Reader*1*2	Enables you to view each PDF manual for the applications.
OMS_	Open Music System (OMS)*1	Enables you to use several MIDI applications on the Mac OS.
	OMS Setup for YAMAHA	Contains the OMS Setup files for Yamaha tone generators.
USBdrv_	YAMAHA USB MIDI driver	Enables your computer to communicate with the MOTIF-RACK when your computer and the MOTIF-RACK are connected using a USB cable.
MRackEditor_	Voice Editor for MOTIF-RACK*1	Enables you to edit the MOTIF-RACK voices on your computer.
VLVEditor_	VL Visual Editor*1	Enables you to edit the Plug-in Boards voices on your computer. Even if you don't have any Plug-in Boards, you can install these editors and at least view all the comprehensive parameters available and the easy-to-use, intuitive ways of editing them.
ANEXEditor_	AN Expert Editor*1	
DXSim_	DX Simulator*1	
DREditor_	Plug-in Board Editor for PLG150-DR*1	
PCEditor_	Plug-in Board Editor for PLG150-PC*1	

*1 These applications are supplied with online/PDF manuals.

*2 Unfortunately, Yamaha makes no guarantee concerning the stability of these programs nor can it offer user support for them.

Minimum System Requirements

The system requirements below may differ slightly depending on the particular operating system.

• Voice Editor for MOTIF-RACK

- OS:** Mac OS 8.6 through Mac OS 9.22 (The Mac OS X and Mac Classic environments are not supported)
- Computer:** A Macintosh computer with a PowerPC or later CPU
- Available Memory:** 16 MB or more
- Hard Disk:** 32 MB or more
- Display:** 800 x 600, 32,000 colors or more

• Plug-in Board Editors

- OS:** Mac OS 8.0 through Mac OS 9.22 (The Mac OS X and Mac Classic environments are not supported)
When using the Plug-in Board Editor for PLG150-DR/PLG150-PC, Mac OS 8.6 through Mac OS 9.22 (The Mac OS X and Mac Classic environments are not supported)
- Computer:** A Macintosh computer with a PowerPC or later CPU
- Available Memory:**
 - DX Simulator/AN Expert Editor: 13MB or more
 - VL Visual Editor: 5MB or more
 - Plug-in Board Editor for PLG150-DR/PLG150-PC: 12MB or more
- Hard Disk:**
 - DX Simulator: 5.5MB or more
 - AN Expert Editor: 7.5MB or more
 - VL Visual Editor: 5MB or more
 - Plug-in Board Editor for PLG150-DR/PLG150-PC: 16MB or more
- Display:** 800 x 600, 256 colors or more
When using the VL Visual Editor, 640 x 480 or more

• USB MIDI Driver

- OS:** Mac OS 8.5 through Mac OS 9.22 (The Mac OS X and Mac Classic environments are not supported)
- Computer:** A Macintosh computer with a USB connector and a PowerPC or later CPU
- Memory:** 64 MB or more (128 MB or more is recommended)
- NOTE** Turn off virtual memory.
- Hard disk:** 2 MB or more
- Other:** OMS 2.3.8 (included in the CD-ROM in the package)

Software Installation

Acrobat Reader

In order to view the electronic (PDF) manuals included with each application, you'll need to install Acrobat Reader.

- 1 Double-click on the "Acroread_" folder.
Three different language folders will be displayed: English, German and French.
- 2 Select the language you want to use and double-click on its folder.
"Reader Installer" will be displayed.
The Installer name may differ depending on the language you select.
- 3 Double-click on the "Reader Installer."
Acrobat Reader Setup Dialog will be displayed.
- 4 Execute the installation by following the directions appearing on the screen.
After installation is complete, the Acrobat folder appears on your computer (in Hard Disk, as the default).
For information on using the Acrobat Reader, refer to the Reader Guide in the Help menu.

Open Music System (OMS) 2.3.8

OMS allows you to use several MIDI applications on the Mac OS at the same time.

- 1 Double-click on the "OMS" folder (English version only).
"Install OMS 2.3.8" will be displayed.
 - 2 Double-click on "Install OMS 2.3.8."
OMS Setup Dialog will be displayed.
 - 3 Execute the installation by following the on-screen directions.
After the installation, select "Restart."
- NOTE** After the installation is complete, you may possibly encounter an error message warning that the installer did not close. In this case, go to the "File" menu and select "Quit" to close the installer. Then reboot the computer.

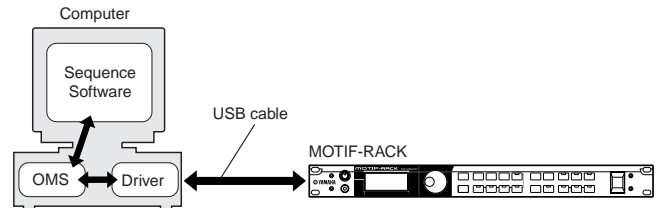
After restarting the Macintosh, you will find the "Opcode"/"OMS Applications" folder on your computer (Hard Disk, as the default).

- 4 Copy the "OMS_2.3_Mac.pdf" in the CD-ROM to the "OMS Applications" folder (drag-and-drop it to the folder).
Refer to the "OMS_2.3_Mac.pdf" (English version only) how to use the application.
- 5 Copy the "OMS Setup for YAMAHA" in the CD-ROM to the "OMS Applications" folder (drag-and-drop it to the folder).
In the "OMS Setup for YAMAHA" folder you will find the OMS Setup files for the Yamaha tone generators, which can be used as templates.

USB MIDI Driver

To operate the MOTIF-RACK from your computer via USB, you'll need to install the appropriate driver software.

The USB-MIDI driver is software that transfers MIDI data back and forth between sequence software and the MOTIF-RACK via a USB cable.



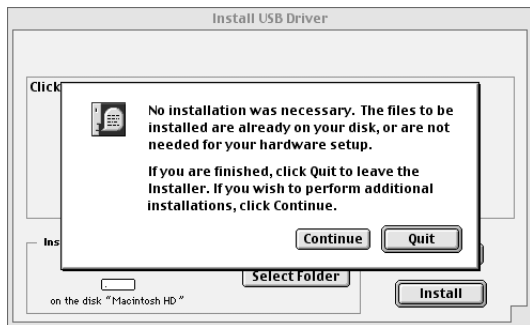
First install OMS before installing the USB-MIDI driver. Also, after installing the driver, you will need to set up OMS (above).

- 1 Start the computer.
- 2 Insert the included CD-ROM into the CD-ROM drive. The system displays the CD-ROM icon on the desktop.
- 3 Double-click the CD-ROM icon and double-click the "Install USB Driver" icon in the "USBdrv_" folder to display the following installation screen.



- 4 The "Install Location" box displays the destination of the installation. If you wish to change the destination disk or folder, use the [Switch Disk] button and the pop-up menu to specify the desired destination.
NOTE This box usually displays the start-up disk as the destination.
- 5 Click the [Install] button. The system displays the following message: "This installation requires your computer to restart after installing this software. Click Continue to automatically quit all other running applications." Click [Continue].
NOTE To cancel the installation, click [Cancel].

- The installation starts. If the driver has already been installed, the following message appears. To return to step 3, press [Continue]. To complete the installation, click [Quit].



- When the installation is complete, the system displays the following message: "Installation was successful. You have installed software which requires you to restart your computer." Click [Restart]. The computer automatically restarts. You can locate the installed files in the following locations:

- System Folder | Control Panels | YAMAHA USB MIDI Patch
- System Folder | Extensions | USB YAMAHA MIDI Driver
- System Folder | OMS Folder | YAMAHA USB MIDI OMS Driver

Voice Editor for MOTIF-RACK, Editors for Plug-in Boards

You can edit the voices of the MOTIF-RACK and Plug-in Boards on your computer.

- Double-click on the desired folder (page 9). "Install ***" ("***" indicates the application name) will be displayed.
- Double-click on "Install ***". The Software Setup Dialog will be displayed.
- Execute the installation by following the on-screen directions. After installing, you will find the "YAMAHA Tools" folder on your computer (Hard Disk as the default). For details, refer to the on-line Help or the PDF owner's manual.

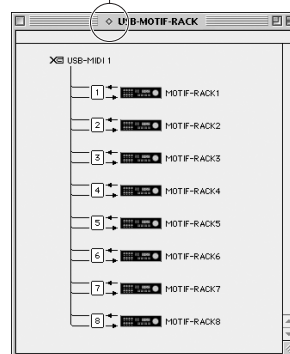
Setting up OMS

The OMS studio setup file for the MOTIF-RACK is contained in the included CD-ROM. This studio setup file is used for setting up OMS.

NOTE Before performing the following procedure, the OMS and USB MIDI Driver should be installed.

- Use a USB cable to connect the USB terminal of the computer (or the USB hub) to the USB terminal of the MOTIF-RACK and turn the MOTIF-RACK's power on.
- Start the computer.
- Insert the included CD-ROM into the CD-ROM drive of your Macintosh computer. The CD-ROM icon appears on the desktop.
- Double-click on the CD-ROM icon, "International", "OMS", and "OMS Setup for YAMAHA."
The "USB-MOTIF-RACK" file appears. Copy this to the hard disk on your computer.
- Double-click on the "USB-MOTIF-RACK" file to start the OMS Setup.
NOTE If you are connecting several MOTIF-RACKs to the computer, a USB hub is necessary.
- After starting the OMS Setup, the Studio setup file double-clicked in step #5 opens.

Indicates this setup is available



NOTE If "◊" is not indicated at the right of the setup file name, select "Make Current" from the "File" menu and execute the save operation.

The OMS studio setup has been completed.

NOTE After the OMS studio setup above has been completed, your computer will recognize only the MOTIF-RACK as a MIDI instrument. If you use another MIDI instrument in addition to the MOTIF-RACK or you add a second MOTIF-RACK to the existing system, you should create an original Studio Setup file. For details, refer to the on-line manual supplied with the OMS.

NOTE The included OMS studio setup file may not function even if you follow the above procedure, depending on your Macintosh/Mac OS version. (MIDI data cannot be transmitted/received even if the setup becomes available.)

In this situation, connect your Macintosh to the MOTIF-RACK via the USB cable and follow the procedure below to re-create the setup file.

- Start OMS Setup and select "New Setup" from the "File" menu.
- The "OMS Driver Search" dialog appears. Remove the check from the "Modem" and "Printer" check boxes, and click [Search] to execute the device search.
If the Search operation has been completed successfully, the [USB-MIDI] device is displayed in the OMS driver setting dialog.
- Click the [OK] button to search for ports. Port 1, Port 2 ... appears in the dialog. Mark the appropriate checkbox of the port and click the [OK] button to store the setting.

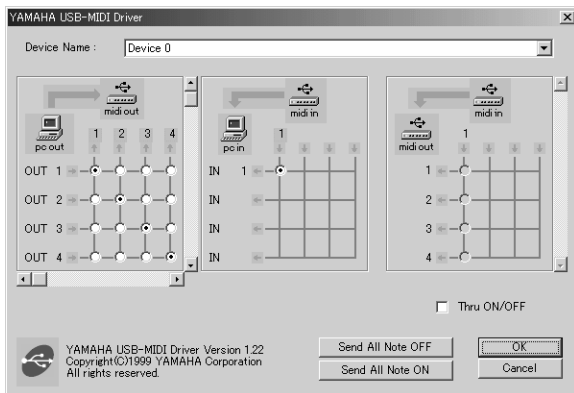
For Windows/ Macintosh Users

About the USB Driver Setup window

From this window, you can change the MIDI port number transmitted to the MOTIF-RACK from the one set in the computer sequence software.

For Windows, select [START] (→ [Settings]) → [Control Panel] → [MIDI-USB Driver] to open the driver setup window.

For the Mac, select [Apple] menu → [Control Panels] → [YAMAHA USB MIDI Patch] to open the setup window.



The default settings are as follows.

Port number	MIDI OUT terminal (Thru Port number*)	MIDI IN terminal (Track Port number)
1	MIDI OUT (1)	MIDI IN (1)
2	MIDI OUT (2)	-
3	MIDI OUT (3)	-
4	MIDI OUT (4)	-
5	MIDI OUT (5)	-
6	MIDI OUT (6)	-
7	MIDI OUT (7)	-
8	MIDI OUT (8)	-

* This is actually the MIDI port number set from the MIDI display in the Utility mode.

Troubleshooting

The driver cannot be installed.

- Is the USB cable connected correctly?
 - Check the USB cable connection.
 - Disconnect the USB cable, then connect it again.

Windows

- Is the USB function enabled on your computer?
 - When you connect the MOTIF-RACK to the computer for the first time, if the “Add New Hardware Wizard” does not appear, the USB function on the computer may be disabled. Perform the following steps.
 - ① Double-click “System” in the Control Panel to open the System Properties window.
 - ② Double-click the “Device Manager” tab and make sure that no “!” or “x” marks appear at “Universal serial bus controller” or “USB Root Hub.” If you see an “!” or “x” mark, the USB controller is disabled. For more information, refer to the owner’s manual of your computer.

Windows

- Is any unknown device registered?
 - If driver installation fails, the MOTIF-RACK will be marked as an “Unknown device,” and you will not be able to install the driver. Delete the “Unknown device” by following the steps below.
 - ① Double-click “System” in the Control Panel to open the System Properties window.
 - ② Double-click the “Device Manager” tab. With the “View devices by type” check box checked, look for “Other devices.”
 - ③ If you find “Other devices,” double-click it to extend the tree to look for “Unknown device.” If one appears, select it and click the [Remove] button.
 - ④ Remove the USB cable from the MOTIF-RACK, and make the connection again.
 - ⑤ Install the driver again.

When controlling the MOTIF-RACK from your computer via USB, the MOTIF-RACK does not operate correctly or no sound is heard.

- Did you install the driver?
- Is the USB cable connected correctly?
- Are the volume settings of the tone generator, playback device, and application program set to the appropriate levels?
- Have you selected an appropriate port in the sequence software?
- Check whether the MIDI IN/OUT setting in the Utility mode corresponds to the terminal/cable actually used (USB or MIDI) (see MOTIF-RACK Owner’s Manual page 61).

Playback response is delayed.

- Does your computer satisfy the system requirements?
- Is any other application or device driver running?

Macintosh

- Turn off virtual memory.
- Disable AppleTalk.

Cannot suspend or resume the computer correctly.

- Do not suspend the computer while the MIDI application is running.
- If you are using Windows 2000, you may not be able to suspend/resume normally, depending on the particular environment (USB Host Controller, etc.). Even so, simply disconnecting and connecting the USB cable will allow you to use the MOTIF-RACK functions again.

How can I delete or re-install the driver?

Windows Me/98

- ① When the MOTIF-RACK is recognized correctly, double-click “System” in the Control Panel to open the System window.
- ② Double-click the “Device Manager” tab, select “YAMAHA USB MIDI Driver” and delete it.
- ③ Use the MS-DOS prompt or Explorer to delete the following three files.

NOTE To delete the files below using Explorer, select “Folder Options” from the Tool (View) menu, and select “Show all files (and folders).”

 - \WINDOWS\INF\OTHER\YAMAHAMOTIF-R.INF
 - \WINDOWS\SYSTEM\Xgusb.driv
 - \WINDOWS\SYSTEM\Ymidusb.sys
- ④ Disconnect the USB cable.
- ⑤ Restart the computer.
- ⑥ Re-install the driver.

Macintosh

- ① Delete the files in the following locations:
 - System Folder | Control Panels | YAMAHA USB MIDI Patch
 - System Folder | Extensions | USB YAMAHA MIDI Driver
 - System Folder | OMS Folder | YAMAHA USB MIDI OMS Driver
- ② Restart the computer.
- ③ Install the driver and set up OMS.

The demonstration song plays, but the voices sound wrong or unexpected.

Windows

- The demonstration song in the CD-ROM is designed for play back with the MOTIF-RACK’s default (factory set) settings. For proper playback, execute the Factory Set operation (see MOTIF-RACK Owner’s Manual page 56).

SOFTWARE LICENSING AGREEMENT

The following is a legal agreement between you, the end user, and Yamaha Corporation (“Yamaha”). The enclosed Yamaha software program is licensed by Yamaha to the original purchaser for use only on the terms set forth herein. Please read this licensing agreement with care. Opening this package indicates that you accept all terms outlined herein. If you do not agree to the terms, return this package unopened to Yamaha for a full refund.

1. GRANT OF LICENSE AND COPYRIGHT

Yamaha grants you, the original purchaser, the right to use one copy of the enclosed software program and data (“SOFTWARE”) on a single-user computer system. You may not use it on more than one computer or computer terminal. The SOFTWARE is owned by Yamaha and is protected by Japanese copyright laws and all applicable international treaty provisions. You are entitled to claim ownership of the media in which the SOFTWARE is included. Therefore, you must treat the SOFTWARE like any other copyrighted materials.

2. RESTRICTIONS

The SOFTWARE program is copyrighted. You may not engage in reverse engineering or reproduction of the SOFTWARE by other conceivable methods. You may not reproduce, modify, change, rent, lease, resell, or distribute the SOFTWARE in whole or in part, or create derivative works from the SOFTWARE. You may not transmit or network the SOFTWARE with other computers. You may transfer ownership of the SOFTWARE and the accompanying written materials on a permanent basis provided that you retain no copies and the recipient agrees to the terms of the licensing agreement.

3. TERMINATION

The licensing condition of the software program becomes effective on the day that you receive the SOFTWARE. If any one of the copyright laws or clauses of the licensing conditions is violated, the licensing agreement shall be terminated automatically without notice from Yamaha. In this case, you must destroy the licensed SOFTWARE and its copies immediately.

4. PRODUCT WARRANTY

Yamaha warrants to the original purchaser that if the SOFTWARE, when used in normal conditions, will not perform the functions described in the manual provided by Yamaha, the sole remedy will be that Yamaha will replace any media which proves defective in materials or workmanship on an exchange basis without charge. Except as expressly set forth above, the SOFTWARE is provided “as is,” and no other warranties, either expressed or implied, are made with respect to this software, including, without limitation the implied warranties of merchantability and fitness for a particular purpose.

5. LIMITED LIABILITY

Your sole remedies and Yamaha’s entire liability are as set forth above. In no event will Yamaha be liable to you or any other person for any damages, including without limitation any incidental or consequential damages, expenses, lost profits, lost savings or other damages arising out of the use or inability to use such SOFTWARE even if Yamaha or an authorized dealer has been advised of the possibility of such damages, or for any claim by any other party.

6. GENERAL

This license agreement shall be interpreted according to and governed by Japanese laws.